

FLÜGEL-RÜCKSCHLAGVENTIL ("PRIKLOPAC") PN 10 STAHLGESCHWEISSTE AUSFÜHRUNG

BUTTERFLY CHECK VALVE "PRIKLOPAC" PN 10 WELDED STEEL

Artikelnummer
Model N°

V2 – 09V

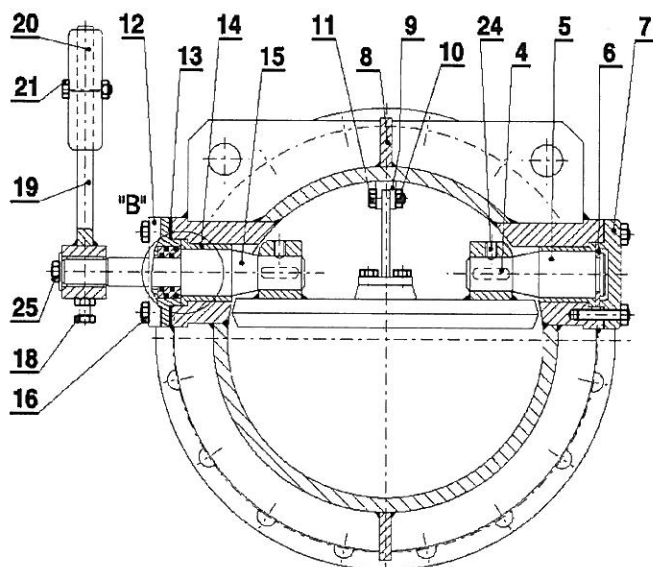
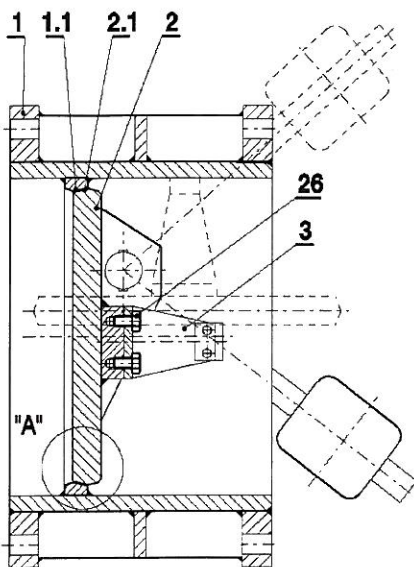
NENNWEITE NOMINAL SIZE DN	NENNDRUCK PRESSURE RATING PN bar	FLANSCH FLANGES EN 1092-2 (DIN 2501) bar	WASSERPRÜFD RUCK TEST PRESSURE bar		ZULÄSSIGER DRUCK BEI TEMPERATUR ADMISSIBLE PRESSURE AT TEMPERATURE 70°Cmax bar
			GEHÄUSE BODY 16	IM ABSCHLUSS CLOSED 10	
150 - 2000	10	10	16	10	10

VERWENDUNG: WASSER, TRINKWASSER, GAS
APPLICATION: WATER, DRINKING-WATER, GAS

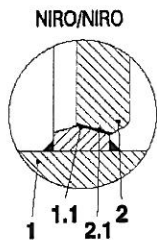
Fertigungskontrolle nach EN 12266 (DIN 3230)
Test according to EN 12266 (DIN 3230)

Baulängenreihe: EN 558-1 SERIES 14 (DIN 3202 Reihe F 4)
Face to face: EN 558-1 SERIES 14 (DIN 3202 Series F 4)

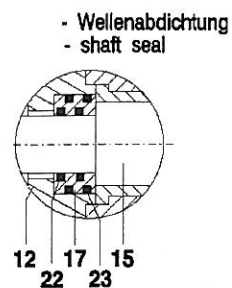
Einbauflange nach EN 1092-2 (DIN 2501) oder auf Anfrage nach
DIMA 1882, UNI, BS, ANSI, NF
Installation flanges according to EN 1092-2 (DIN 2501) or on request to
DIMA 1882, UNI, BS, ANSI, NF



DETAIL A
DETAIL



DETAIL B
DETAIL



TEIL PART	WERKSTOFF NACH EN MATERIAL ACC TO EN	WERKSTOFF NACH DIN MATERIAL ACC TO DIN
1	S235JR	St 37-2
1.1	Cr Ni PLASMA	Cr Ni PLASMA
2	S235JR	St 37-2
2.1	Cr Ni PLASMA	Cr Ni PLASMA
3	S235JR	St 37-2
4	C 45 / A2	C 45 / A2
5	X20 Cr13	X20 Cr13
6	CC491K	CuSn 5 ZnPb
7	S235JR	St 37-2
8	S235JR	St 37-2
9	EPDM	EPDM
10	A2	A2
11	A2	A2
12	S235JR	St 37-2
13	ARAMID	ARAMID

14	CC480K	Cu Sn 10
	PTFE - Compound	PTFE - Compound
16	X20 Cr13	X20 Cr13
16	8.8 gal. Zn / A2	8.8 gal. Zn / A2
17	CC480K	Cu Sn 10
18	8.8 gal. Zn / A2	8.8 gal. Zn / A2
19	S235JR	St 37-2
20	EN-GJL-250	GG 25
21	8.8 gal. Zn / A2	8.8 gal. Zn / A2
22	EPDM	EPDM
23	EPDM	EPDM
24	A2	A2
25	8.8 gal. Zn / A2	8.8 gal. Zn / A2
26	8.8 gal. Zn / A2	8.8 gal. Zn / A2

Andere Werkstoffe auf Anfrage.
Other materials on request.



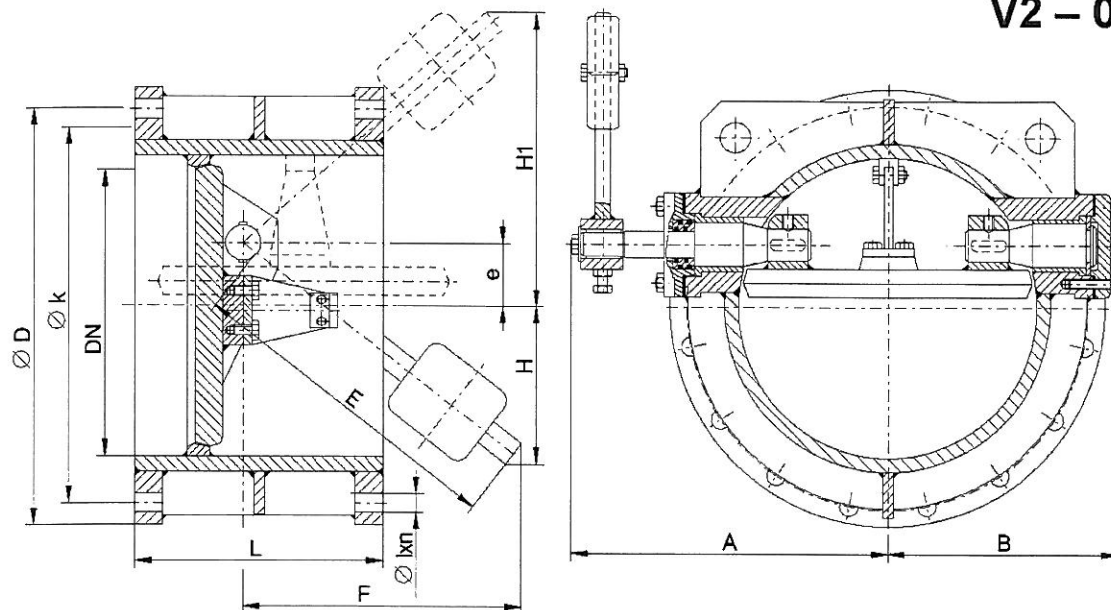
EBRO ARMATUREN GESMBH
Seybelgasse 13, Top 9, A-1230 Vienna, Austria
Tel: +43 1 865 96 04 0 Fax: +43 1 865 96 04 15
www.ebro.at office@ebro.at

FLÜGELRÜCKSCHLAGVENTIL ("PRIKLOPAC") PN 10 STAHLGESCHWEISSTE AUSFÜHRUNG

BUTTERFLY CHECK VALVE "PRIKLOPAC" PN 10 WELDED STEEL

Artikelnummer
Model N°

V2 - 09V



PN 10 (St 37-2)

DN	L	D	k	n	l	e	A	B	E	F	H	H ₁	m kg
150	210	285	240	8	23	30	230	180	300	225	195	255	40,5
200	230	340	295	8	23	40	250	240	300	225	185	265	64
250	250	395	350	12	23	48	310	290	300	225	175	271	80
300	270	445	400	12	23	62	340	320	450	318	256	380	110
350	290	505	460	16	23	70	380	350	450	318	248	388	160
400	310	565	515	16	28	81	410	380	600	442	361	523	192
450	330	615	565	20	28	90	420	390	600	442	352	532	210
500	350	670	620	20	28	100	490	440	600	442	342	542	240
600	390	780	725	20	31	124	555	500	600	442	318	566	360
700	430	895	840	24	31	145	630	570	700	495	350	640	520
800	470	1015	950	24	34	165	700	650	800	566	401	731	650
900	510	1115	1050	28	34	185	770	720	1000	707	522	892	910
1000	550	1230	1160	28	37	203	840	790	1000	707	504	910	1200
1200	630	1455	1380	32	41	300	915	795	1050	742	442	1042	2000
1400	710	1675	1590	36	44	350	1150	925	1100	778	428	1128	2700
1500	750	1785	1700	36	44	262	1090	920	1500	1081	799	1323	4250
1600	790	1915	1820	40	50	290	1400	1050	1600	1132	842	1422	5432
1800	870	2115	2020	44	50	295	1605	1255	1800	1273	978	1568	6440
2000	950	2325	2230	48	50	300	1800	1460	2000	1414	1114	1714	10360