



Emile EGGER & Cie SA		Technical data sheet TV 41-40 FOF4 LB 2						
Route de Neuchâtel 36 CH-2088 Cressier / NE		Offer no.:	54217		Data sheet pos. no 1.1 Page 1 of 2			
Phone : - Fax : - -		Order no.						
		Serial no./quantity	1Piece					
		Delivery date:						
Customer	-		Date / Our ref.:	2012-01-06				
Person/Dept.			Customer order					
ZIP/City	--		Project / Installation					
			Item no.					
Duty points				<i>Test values referring to</i>				
A1	Liquid	Water		Min.	Nominal	Max.	Water	
A2	Solids	Type		Capacity	15		----	
A3		Weight %		Suction static geod.	m		----	
A4		Particle Ø	mm	Suction pressure	bar		----	
A5	Gas content	Volume %		Discharge static geod.	m	0	----	
A6	pH-value at Tw			Discharge pressure	bar		----	
A7	Working temp. = Tw	°C		Differential head	m	8		
A8	Specific gravity	kg/dm³	0.99819	NPSH _A (Installation)	m	0	----	
A9	Kinematic viscosity at Tw	mm²/s	1	NPSH _R (Pump)	m	1.9		
A10	Vapour pressure at Tw	bar	0.022	Nominal speed	1/min	1390		
A11	Sticking point	°C		Nominal efficiency	%	44		
A12	Altitude of installation	ASL m	< 1000	Absorbed power	kW	.7		
A13								
PUMP								
B1	Pump designation	TV 41-40 FOF4 LB 2		Impeller type	Vortex impeller		Z = 8	
B2	Design	Vertical, wet installation - motor dry		Characteristic curve no.	020.00.0402-02			
B3	Arrangement drawing no.	R-983-0/1+2		Max. free Ø passage through pump	mm	50		
B4	Sectional drawing no.	916.86.0000-00		Closed valve head	m	8.8		
B5	Additional drawings no.			Minimum flow	m³/h	3.4		
B6	Suction-flange	Nominal diamet./pressure	DN65	PN10	Impeller Ø	designed	mm	154
B7		Dimensions	DIN 2501			Min. / Max.	mm	126
B8		Face	DIN 2526 FORM D (RF)		Additional absorbed power			kW
B9	Outlet branch	Nominal diamet./pressure	DN50	PN10	Recommended motor power			kW
B10		Dimensions	DIN 2501		Max. casing working pressure			bar
B11		Face	DIN 2526 FORM D (RF)		Casing test pressure at 20°C			6
B12	Ex protection acc. Dir. 94/9/EG			Liquid temp. Admissible min. / max. °C				0 80
B13	Bearing / Lubrication		without		Max. design speed	1/min	1500	
B14	PUMP				Sound pressure level (A) pump/-incl. motor			dB
B15								
B16	Motor	Ball / roller bearing - grease lubrication		Direction of rotation seen from drive-end			cw	
B17								
B18								
B19								
Pump materials				Pump dimensions				
C1		DIN / EN (binding)		Foot plate Ø	mm	350		
C2	Casing	HG15.3		Total installation depth ET (with foot)	mm	701		
C3	Casing cover	HG15.3		Foot height e	mm	56		
C4	Impeller	HG15.3		Starting level from bottom of foot plate	mm			
C5	Wear disc	without						
C6								
C7	Bellmouth or suction pipe	without		Shaft sealing			without	
C8	Stub shaft	CK 45						
C9	Suspension pipe	Steel						
C10	Discharge pipe	without						
C11	Foot plate	St 35						
C12	Bush acc. ex-zone serie T	without						
C13	Elastomers	NBR						
C14	Paint	Specification	Standard R-842-1+R-842-4					
C15		Colour	RAL 5015 (blue)					
C16								
MOTOR								
F1	Manufacturer / Type	ABB	M3AA 90 LD		Design	IM V1	Frame size	90 L
F2	Execution			Explosion proof	--	Protection class	IP 55	
F3	Rating	kW	1.5	Tension	V	400	Frequency	Hz
F4	Starting	Direct	Nom. current		A		Speed	1/min
F5	Specialities			Protection roof		Thermal protection		
F6	Remarks concerning technical data sheet: see next page							
F7								

Emile EGGER & Cie SA Route de Neuchâtel 36 CH-2088 Cressier / NE Phone : - Fax : - -		Technical data sheet TV 41-40 FOF4 LB 2						
		Offer no.:	54217					
		Order no.						
		Serial no./quantity	1Piece					
		Delivery date:			Data sheet pos. no	1.1	Page 2	of 2
Customer	-		Date / Our ref.:	2012-01-06				
Person/Dept.			Customer order					
ZIP/City	--		Project / Installation					
			Item no.					
XX								

Emile EGGER & Cie SA

Route de Neuchâtel 36
CH-2088 Cressier / NE

Phone : -
 Fax : -
 -

**Performance curves:
 TV 41-40 FOF4 LB 2**

Offer no.:	54217
Order no.	
Serial no./quantity	1Piece
Delivery date:	



Data sheet pos. no 1.1 Page 1 of 1

Customer	-	Date / Our ref.:	2012-01-06
Person/Dept.		Customer order	
ZIP/City	--	Project / Installation	
		Item no.	

Impeller

Model number 020.00.0402-02

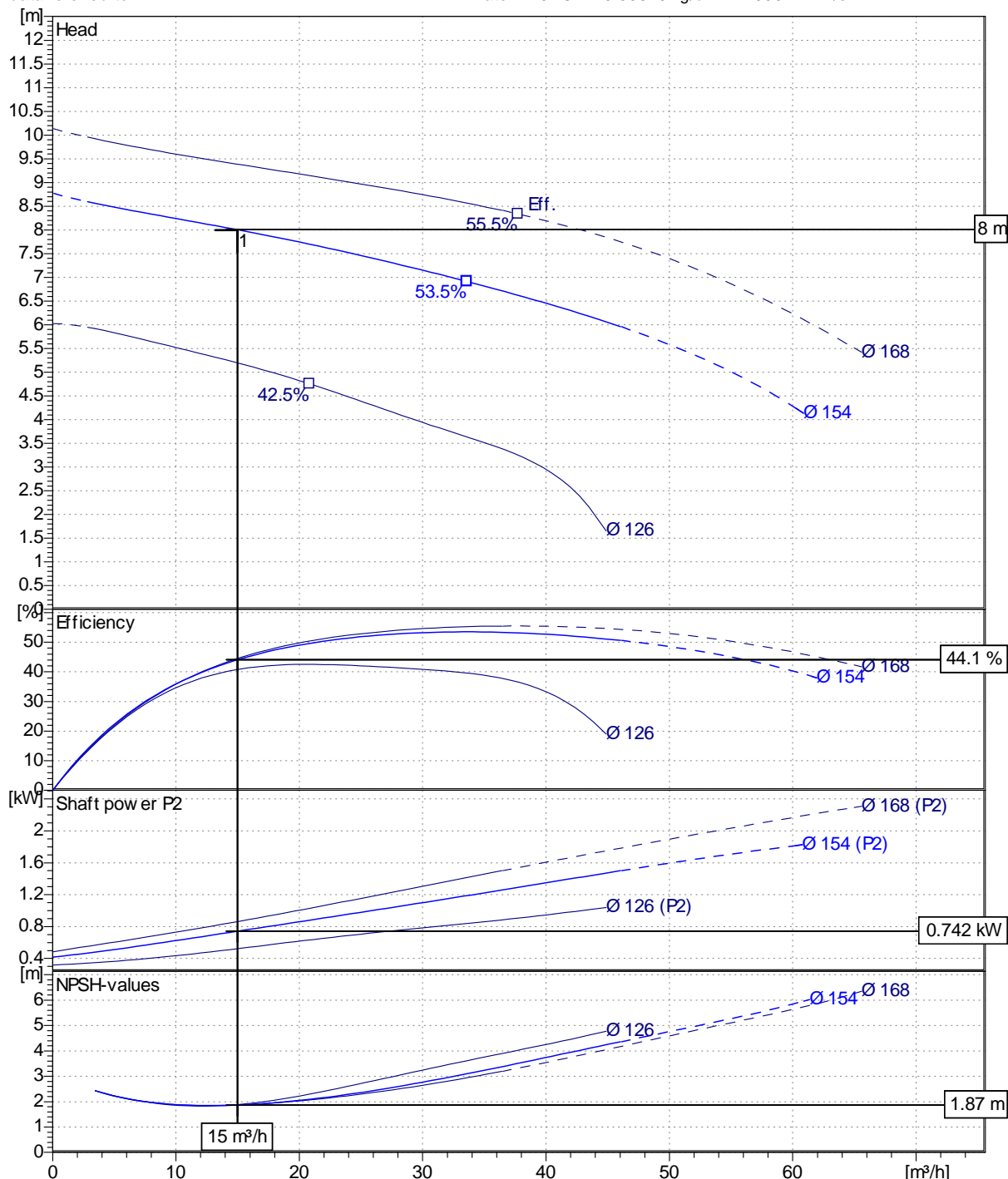
Type:	No. of vanes	Max.	Min.	Sel. Ø:	Free passage:	Bearing bracket:
Vortex impeller	8	168 mm	126 mm	154 mm	50 mm	LB 2

Operating data

Speed:	Frequency:	Duty point:	H = 8 m	Suction port:	Discharge port:
1390 1/min	50 Hz	Q = 15 m³/h		DN65	DN50

Power data referred to:

Water 20 °C 0.99819 kg/dm³ 1.0004 mm²/s



Emile EGGER & Cie SA

Route de Neuchâtel 36

CH-2088 Cressier / NE

Phone :

Fax :

-

**Arrangement drawing
TV 41-40 FOF4 LB 2**

Offer no.: 54217

Order no.

Serial no./quantity

1Piece

Delivery date:

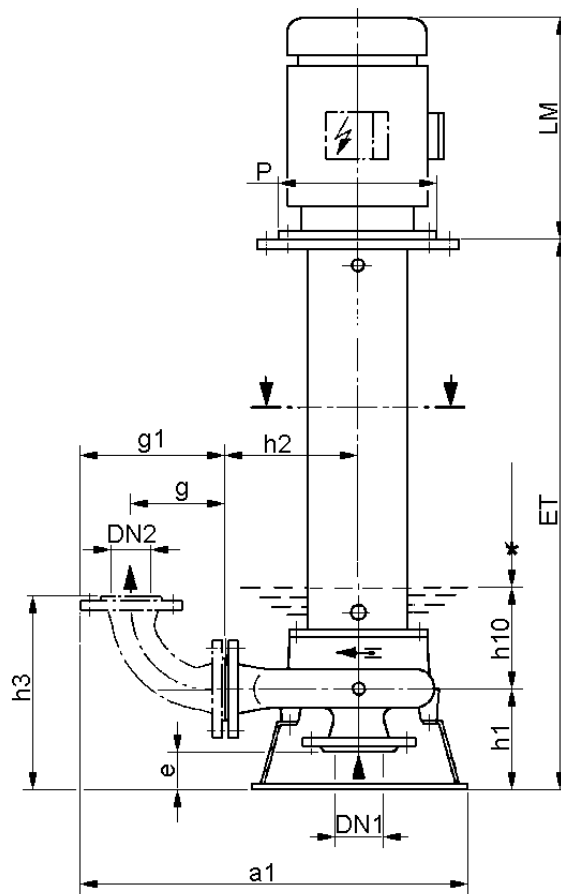


Data sheet pos. no 1.1 Page 1 of 1

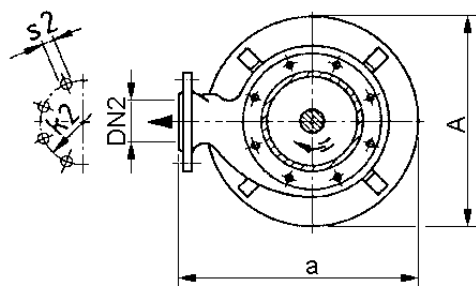
Customer	-	Date / Our ref.:	2012-01-06
Person/Dept.		Customer order	
ZIP/City	--	Project / Installation	
		Item no.	

Cantilever - close-coupled pump

R-983-0/1+2



* Min. Einschaltniveau
Niveau d'enclenchement min.
Min. start level



Dimensions in mm				Measures and weights not binding				Connections	
1	a	385	g1	232	∅	18			Suction flange
2	A	350	h1	156					DN65 PN10
3	a1	617	h10	100					DIN 2501 4 Drilled holes
4	DN1	65	h2	210					Outlet branch
5	DN2	50	h3	306					DN50 PN10
6	e	56	k2	125					DIN 2501 4 Drilled holes
7	ET	701	LM	290					Total weight
8	g	150	P	200					82 kg
MOTOR	Manufacturer / Type		ABB / M3AA 90 LD		Design	IM V1		Frame size	90 L

Emile EGGER & Co. AG
Cressier / NE (Switzerland)
www.eggerpumps.com

Bruxelles (BE)
Graz (AT)
Hilversum (NL)

Mannheim (DE)
Marano (IT)
Barnsley (GB)

Lyon (FR)
San Sebastian (ES)
Stenungsund (SE)

Coimbatore (IN)
SALT LAKE CITY (US)
Warszawa (PL)

Emile EGGER & Cie SA

Route de Neuchâtel 36

CH-2088 Cressier / NE

Phone : -

Fax : -

-

Sectional drawing
TV 41-40 FOF4 LB 2

Offer no.: 54217

Order no.

Serial no./quantity 1Piece

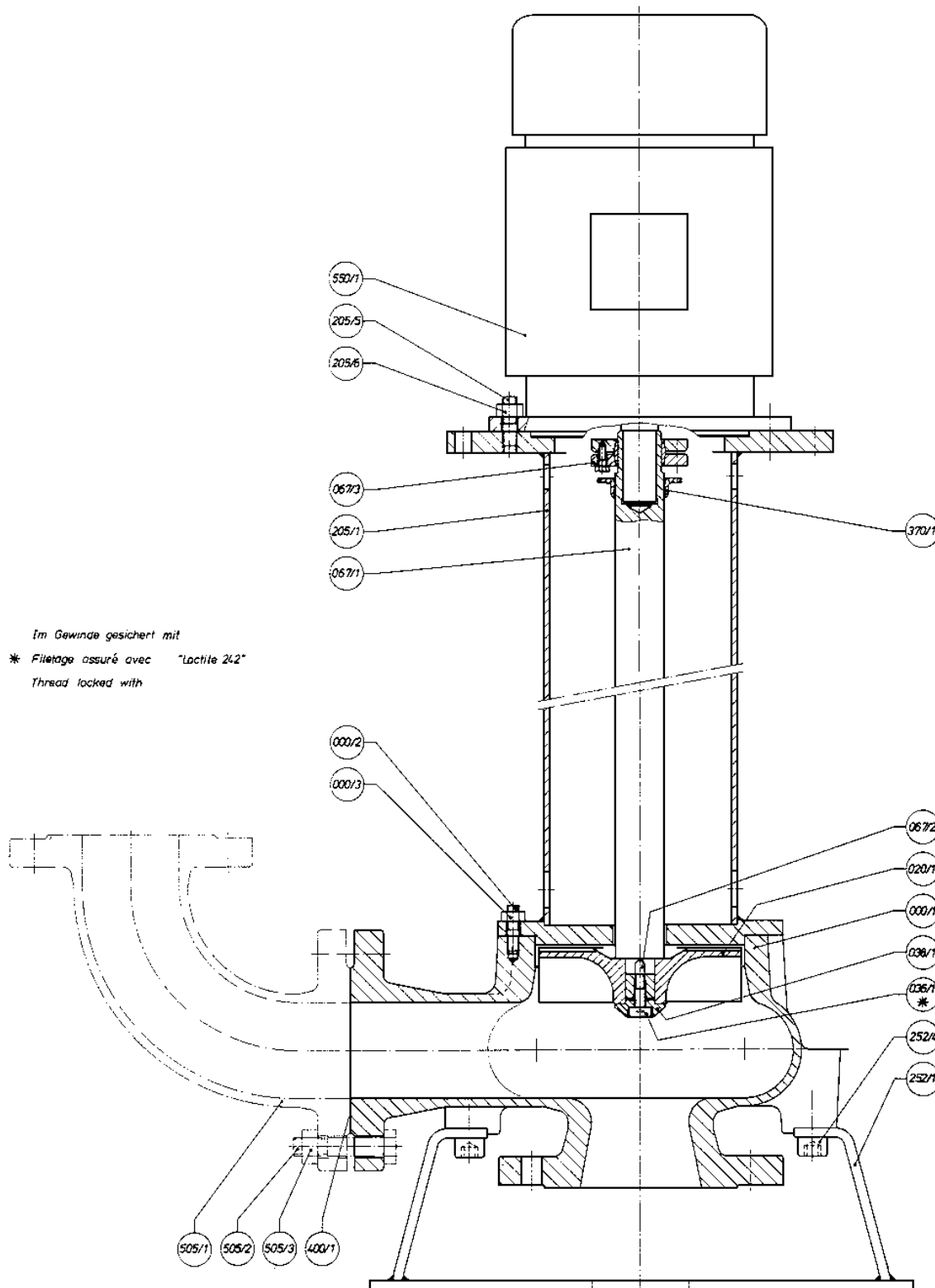
Delivery date:




Data sheet pos. no 1.1 Page 1 of 1

Customer	-	Date / Our ref.:	2012-01-06
Person/Dept.		Customer order	
ZIP/City	--	Project / Installation	
		Item no.	

916.86.0000-00



Im Gewinde gesichert mit
 * Filetage assuré avec "Loctite 242"
 Thread locked with

Emile EGGER & Cie SA Route de Neuchâtel 36 CH-2088 Cressier / NE Phone : - Fax : - -		Sectional drawing TV 41-40 FOF4 LB 2				
		Offer no.:	54217			
		Order no.				
		Serial no./quantity	1Piece			
Delivery date:				Data sheet pos. no 1.1 Page 1 of 1		
Customer	-		Date / Our ref.:	2012-01-06		
Person/Dept.			Customer order			
ZIP/City	--		Project / Installation			
			Item no.			